

Application of the Wall Covering

Required materials:

- folding rule – spirit level – scissors or utility knife (cutter) – ruler – paste brush, paste suitable for wall covering – pressure roller – sponge
- Note: Do not use a wallpaper brush. It will destroy the structure of the wallpaper.

Preparing the wall:

The surface to be wallpapered must be solid, intact, clean, dry, dust-free and level. Existing color differences on the wall – e.g. due to repairs – should be painted over beforehand, otherwise they will be visible through the wallpaper. Furthermore, using a primer coat on the wall surface is recommended. The Norafin flax wallpaper glue can be used for this purpose.

Proceeding step by step:

- We recommend the flax wallpaper glue for wallpapering flax wallpaper, as it was specifically developed for this purpose.
- Measure the strip length. Add an additional 6 cm as a reserve when cutting the strip.
- Use scissors or a utility knife to cut the strips.
- Apply the paste with the paste brush very sparingly and evenly on the wall. Work from the center to the edge. If the ceiling is level, align the strip with the ceiling. If the ceiling is not level, you can leave a few extra centimeters and cut the strip later.
- Note: Only coat the wall with paste, not the flax wallpaper.
- Put the wallpaper against the wall. The first strip of wallpaper is usually glued in a corner, for example along a door or window.
- The following strips will be aligned along the first strip of wallpaper, so make sure that this strip is glued on absolutely vertically.
- Roll the pressure roller lightly over the strip from top to bottom, working from left to right. Make sure that no glue accumulates at the overlap with the next strip.
- Apply the second strip, make sure that it is perfectly flush with the first one and – if your flax wallpaper has a pattern – observe the repeat.
- Note: It is difficult to make corrections once the wallpaper has been pressed to the wall.
- Use the pressure roller to carefully press down the joints between the strips of wallpaper.
- After you have wallpapered the first strips (i.e. the first 3 or 4 strips), you can cut the edges along the ceiling and the baseboard (if necessary).

Note: Should paste accidentally get on the flax wallpaper, it can be carefully dabbed off immediately with a damp sponge.




simply
comfortable

- ✓ good, natural indoor climate thanks to natural components such as flax and viscose
- ✓ insulating properties increase the feel-good climate
- ✓ positive ecobalance, because the cultivation of flax requires substantially less water than that of other natural fibers
- ✓ use of European flax

Plauener Spitze[®]
MADE IN GERMANY



Made at:
Norafin Industries (Germany) GmbH
Gewerbegebiet Nord 3 | 09456 Mildenaу
phone: +49 3733 5507 555
info@norafin.com | www.norafin.com

	
Norafin, Gewerbegebiet Nord 3, 09456 Mildenaу, Deutschland 12	
EN 15102 2007+A1 2011	
Dekorative Wandbekleidung - Rollen- und Plattenform	
Brandverhaltensklasse	B-s1, b0 Auf Gipskartonplatten mit Hilfe eines Klebstoffes auf Basis von Polyvinylacetat und Zellstoff verklebt.
Formaldehydabgabe	bestanden (95mg/kg)
Abgabe weiterer gefährlicher Stoffe	
- Schwermetalle und bestimmte andere Elemente	Barium (500mg/kg) Selen (165mg/kg)
- Vinylchlorid-Monomer (VCM)	bestanden
Schallabsorption	NPD
Wärmedurchlasswiderstand	NPD

features

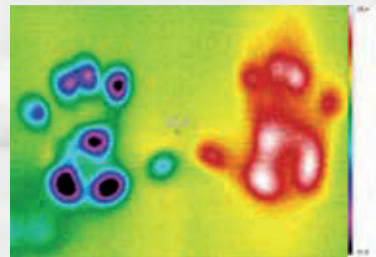
- composition: 65 % flax, 35 % viscose
- warm natural tone in a simple, plain design
- natural structure and easily visible flax fibers
- soft material properties
- high durability through spunlacing • wide range of combination possibilities for individual wall designs:
 - high-quality accent panels embroidered with Plauener Spitze® lace
 - impressive, printed allover or accent strips (odorless, water-based inks)

easy handling

- simple application, efficient and time-saving
- Norafin® flax wallpaper glue is recommended for application
- easy to remove with a damp sponge

thermal resistance

- left: hand rest on 20°C warm wall without flax wallpaper
- right: hand rest on 20°C warm wall with flax wallpaper



It can be observed that the flax wallpaper absorbs heat instead of giving it off to the wall. Thus, it works insulating.

wall material	thermal conductivity λ *) (W/(mK))	source
concrete	2,1	corresponds to the given calculation in plant construction
carpet (335 g/m2)	0,08	
carpet (780 g/m2)	0,06	
wool base	0,06	
cork base	0,05	
glass fiber wall covering	0,035 **)	own calculation
flax fiber wall covering	0,024 **)	own calculation

*) thermal conductivity = amount of heat flowing through a 1 m layer of material with a surface area of 1 m², with a temperature difference of 1 Kelvin

**) calculated by specific weight; the air inclusion in the nonwoven fabric is taken into account in the calculation

The smaller the value, the higher the thermal insulation effect of the tested material

